



Design Planning Brochure

US Standard Plans
Meetinghouse Facilities Department

Updated June 17th, 2026

Introduction	3
Design Selection Chart	4
Program Comparison	5
Granger 250 Meetinghouse	6
Granger 250 Stake Center	9
Granger 300 Meetinghouse	12
Vineyard 300 Stake Center	15
Calvert 60 Meetinghouse	19
Calvert 100 Meetinghouse	22
Creston 150 Meetinghouse	23
Creston 200 Meetinghouse	25

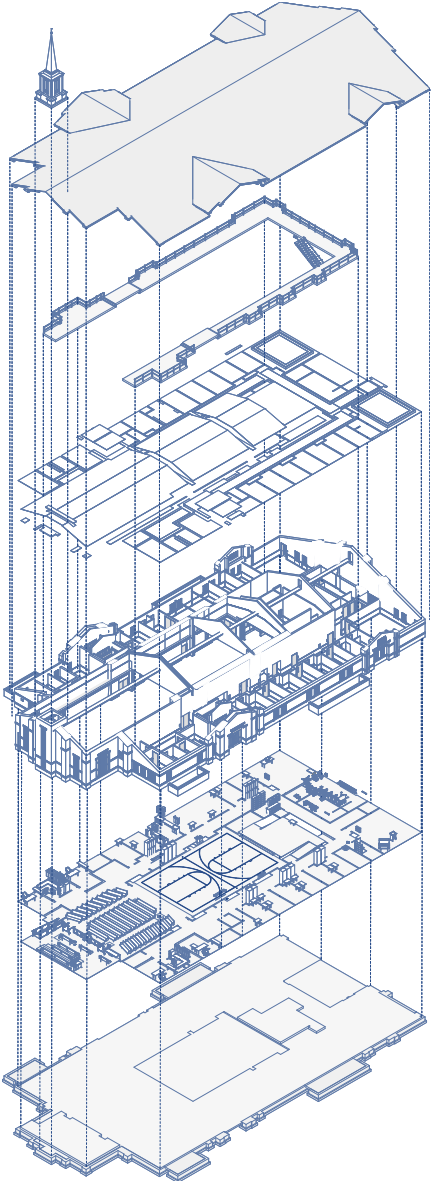


Table of Contents



This brochure is intended to provide an overview of the current selection of approved Meetinghouse and Stake Center featured and reference plans for areas within the United States. It is designed as a general informational guide to assist with planning and design selection.

For complete sets of plans, specifications, and governing documents, please consult the AEC website.

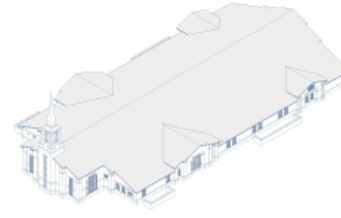
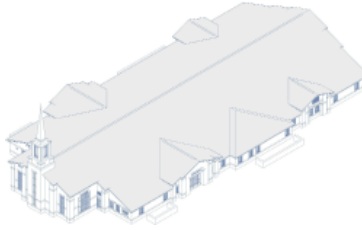
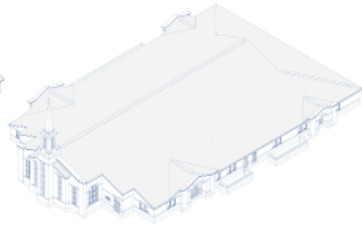
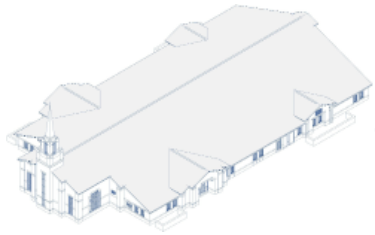
“This tremendous building program is phenomenal. ... Our structures are beautiful. They add to the ambiance of any community in which they stand. ... They combine beauty with great utility. If they look much the same, it is because that is intended. By following tried and tested patterns we save millions of dollars while meeting the needs of our people.”

- President Gordon B. Hinckley, October 2004 General Conference

Introduction

Presiding Bishopric Approved Standard Plans				
Standard Plan Name	Granger 250 MH	Granger 250 SC	Granger 300 MH	Vineyard 300 SC
Attendance Capacities				
One Unit	310	340	350	350
Two Unit	310	330	350	350
Three Unit	250	270	330	320
Four Unit	250	270	310	300
Assembly Seating				
Rostrum	43	43	43	43
Chapel Floor	186	186	206	230
Cultural Center 1, Cultural Center 2, Platform	198, 94, 60	198, 94, 60	226, 104, 68	374, 58
Conference Seating (In view of pulpit; including chapel floor, cultural centers, & platform)	538	538	608	661
Teaching Areas - Includes Chapel, Cultural Centers, Platforms, Serving Area, Ward Leader Offices, Stake Council, and Classrooms	25	22	24	23
Assembly Teaching Areas	4 (Without chapel)	4 (Without chapel)	4 (Without chapel)	4 (Without chapel)
Assembly Areas Capacities (RS, EQ, PR)	75, 61, 70	77, 61, 69	99, 74, 77	119, 102, 83
Stake Council Room	No	Yes	No	Yes
Cultural Center				
Indoor Sports	Yes	Yes	Yes	Yes
Platform (Stage)	Yes	Yes	Yes	Yes
Banquet Seating	184	184	200	232
Offices				
Unit Leader Offices	3	3	3	3
Clerk Offices	3	3	3	3
Stake Offices	No	Yes	No	Yes
Support Spaces				
Serving Area	Yes	Yes	Yes	Yes
Resource Center	Yes	Yes	Yes	Yes
Mothers' Room	Yes	Yes	Yes	Yes
Baptismal Font	No	Yes	Yes	Yes
Building Area (sq. ft)	16,370	17,282	18,336	20,580
Acreage Range	3.5 to 5	4 to 6	4 to 6	5 to 6.5
Parking Range	155 - 220	200 - 240	220 - 260	255 - 290

Design Selection Chart



Granger 300 Meetinghouse

Program:
 Area: 18,336 SF
 Conference Seating: 608
 Teaching Areas: 24
 Banquet Seating: 200
 Unit Lead Offices: 3
 Clerks: 3
Capacity:
 350-1
 350-2
 330-3
 310-4

Vineyard 300 Stake Center

Program:
 Area: 20,580 SF
 Conference Seating: 661
 Teaching Areas: 23
 Banquet Seating: 232
 Unit Lead Offices: 3
 Clerks: 3
Capacity:
 350-1
 350-2
 320-3
 300-4

Granger 250 Stake Center

Program:
 Area: 17,282 SF
 Conference Seating: 538
 Teaching Areas: 22
 Banquet Seating: 184
 Unit Lead Offices: 3
 Clerks: 3
Capacity:
 340-1
 330-2
 270-3
 270-4

Granger 250 Meetinghouse

Program:
 Area: 16,370 SF
 Conference Seating: 538
 Teaching Areas: 25
 Banquet Seating: 184
 Unit Lead Offices: 3
 Clerks: 3
Capacity:
 310-1
 310-2
 240-3
 250-4

Creston 150 Meetinghouse

Program:
 Area: 7,276 SF
 Conference Seating: 172
 Teaching Areas: 12
 Banquet Seating: 144
 Unit Lead Offices: 2
 Clerks: 2
Capacity:
 150-1
 140-2
 100-3
 60-4

Calvert 60 Meetinghouse

Program:
 Area: 3,198 SF
 Conference Seating: 61
 Teaching Areas: 7
 Banquet Seating: 64
 Unit Lead Offices: 1
 Clerks: 1
Capacity:
 60-1

Program Comparison



Granger 250 Meetinghouse

US Standard Plans
Meetinghouse Facilities Department

Program:

Area: 16,370 SF

Assembly Seating:

Rostrum: 43

Chapel Floor: 186

Cultural Center 1: 198

Cultural Center 2: 94

Platform: 60

Conference Seating: 538

Teaching Areas: 25

Assembly Room

Capacities:

RS: 75

EQ: 61

PRI: 70

Cultural Center:

Multi-purpose

Indoor Sports: Yes

Platform: Yes

Banquet Seating: 184

Offices:

Unit Lead Offices: 3

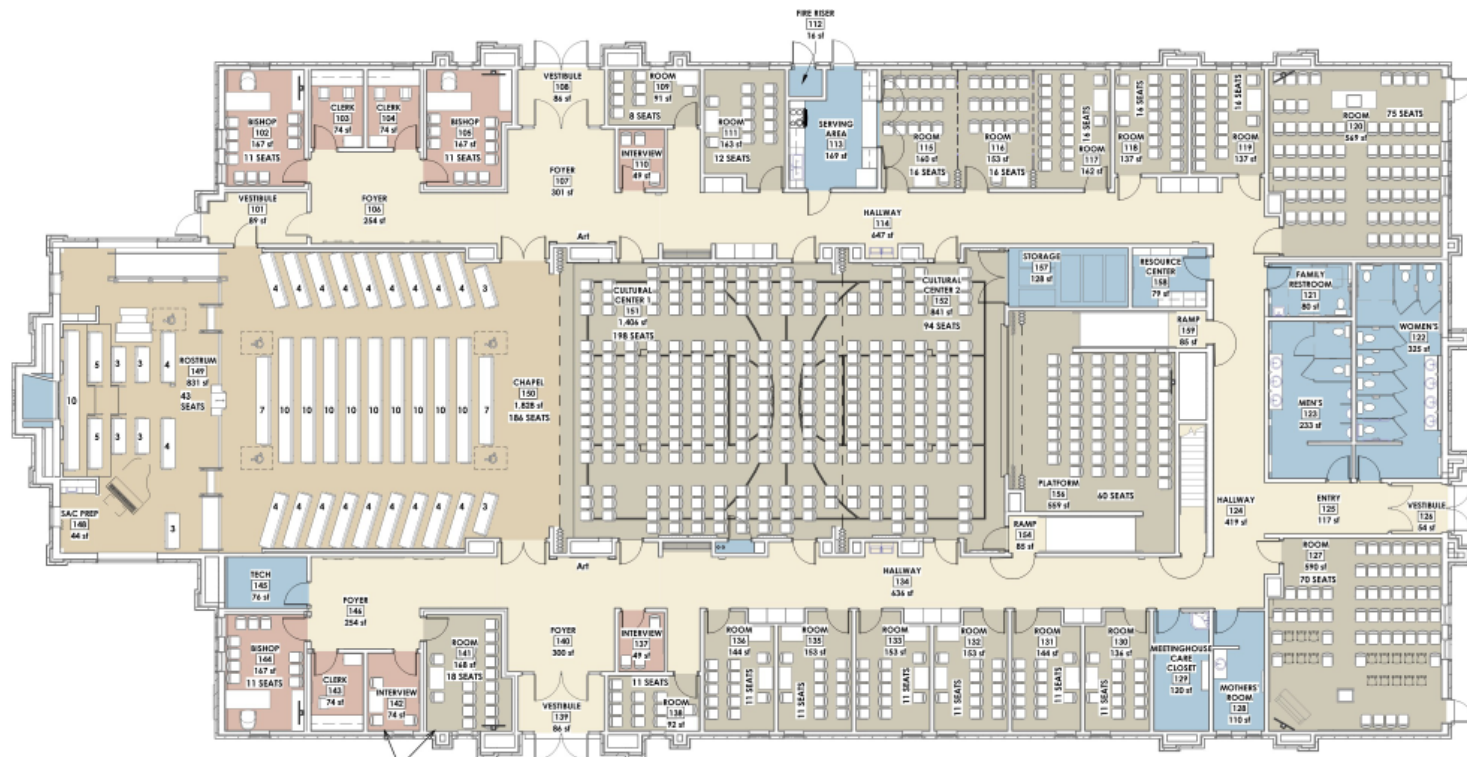
Clerks: 3

Support Spaces:

Serving Area: Yes

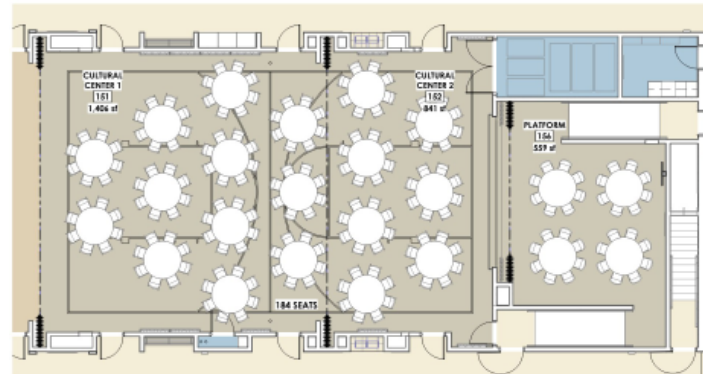
Resource Center: Yes

Mothers' Room: Yes

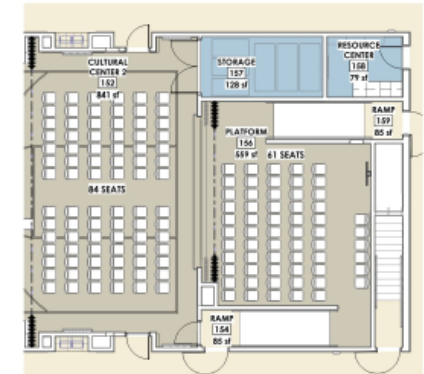


ALTERNATE BISHOPS AND CLERK OFFICE FOR 4 WARDS

Conference/Class Seating Plan

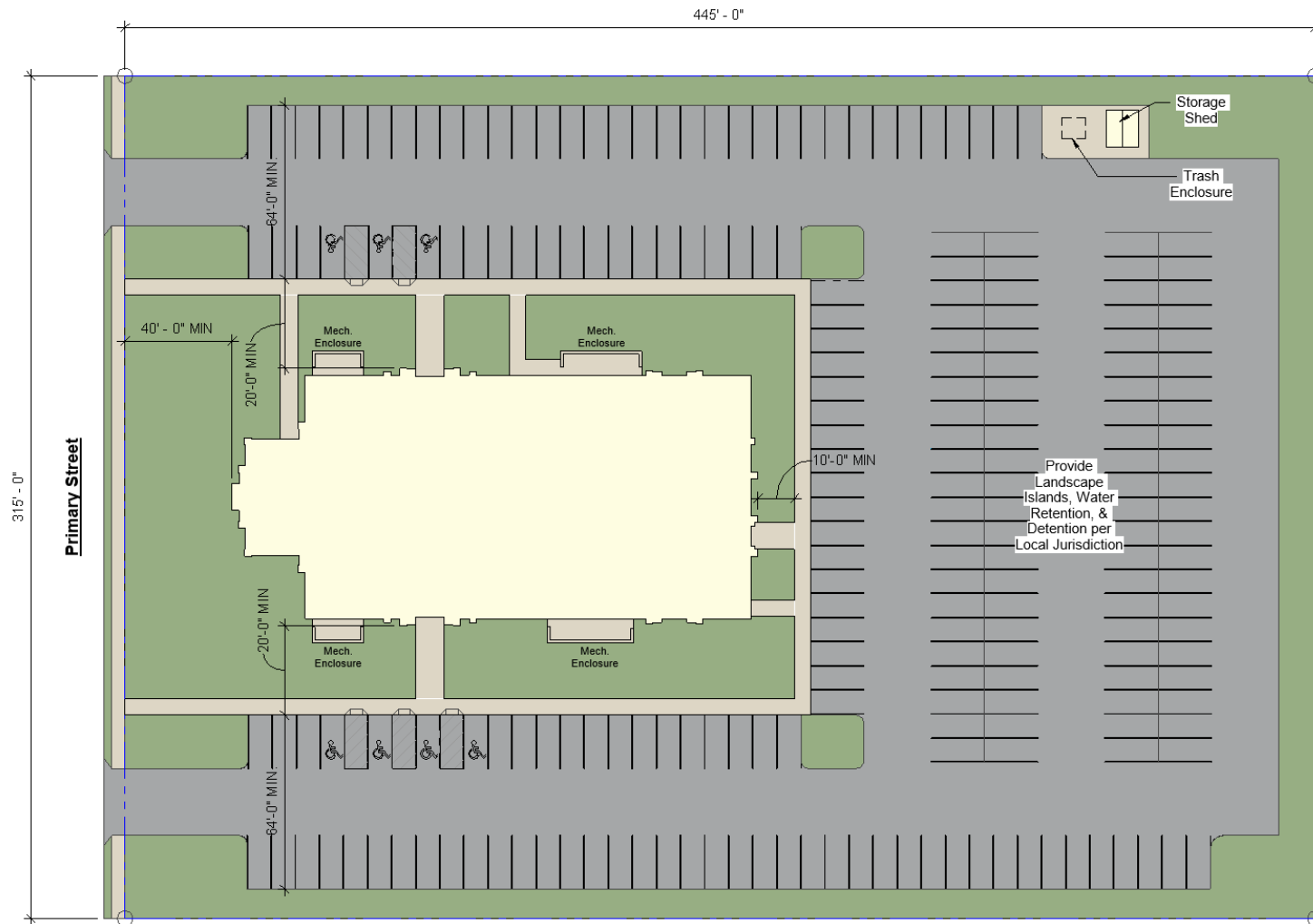


Banquet Seating Plan



Platform Seating Plan

Granger 250 Meetinghouse



Developed Site Size: 3.2 Acres Minimum

Parking: 220 Stalls

Sample Site Plan

1. Storage shed location varies by project.
2. Minimum required site area may vary due to jurisdictional requirements for parking, site retention, setbacks, etc.

Granger 250 Meetinghouse



Granger 250 Stake Center

US Standard Plans
Meetinghouse Facilities Department

Program:

Area: 17,282 SF

Assembly Seating:

Rostrum: 43

Chapel Floor: 186

Cultural Center 1: 198

Cultural Center 2: 94

Platform: 60

Conference Seating: 538

Teaching Areas: 22

Assembly Room

Capacities:

RS: 77

EQ: 61

PRI: 69

Cultural Center:

Multi-purpose

Indoor Sports: Yes

Platform: Yes

Banquet Seating: 184

Offices:

Unit Lead Offices: 3

Clerks: 3

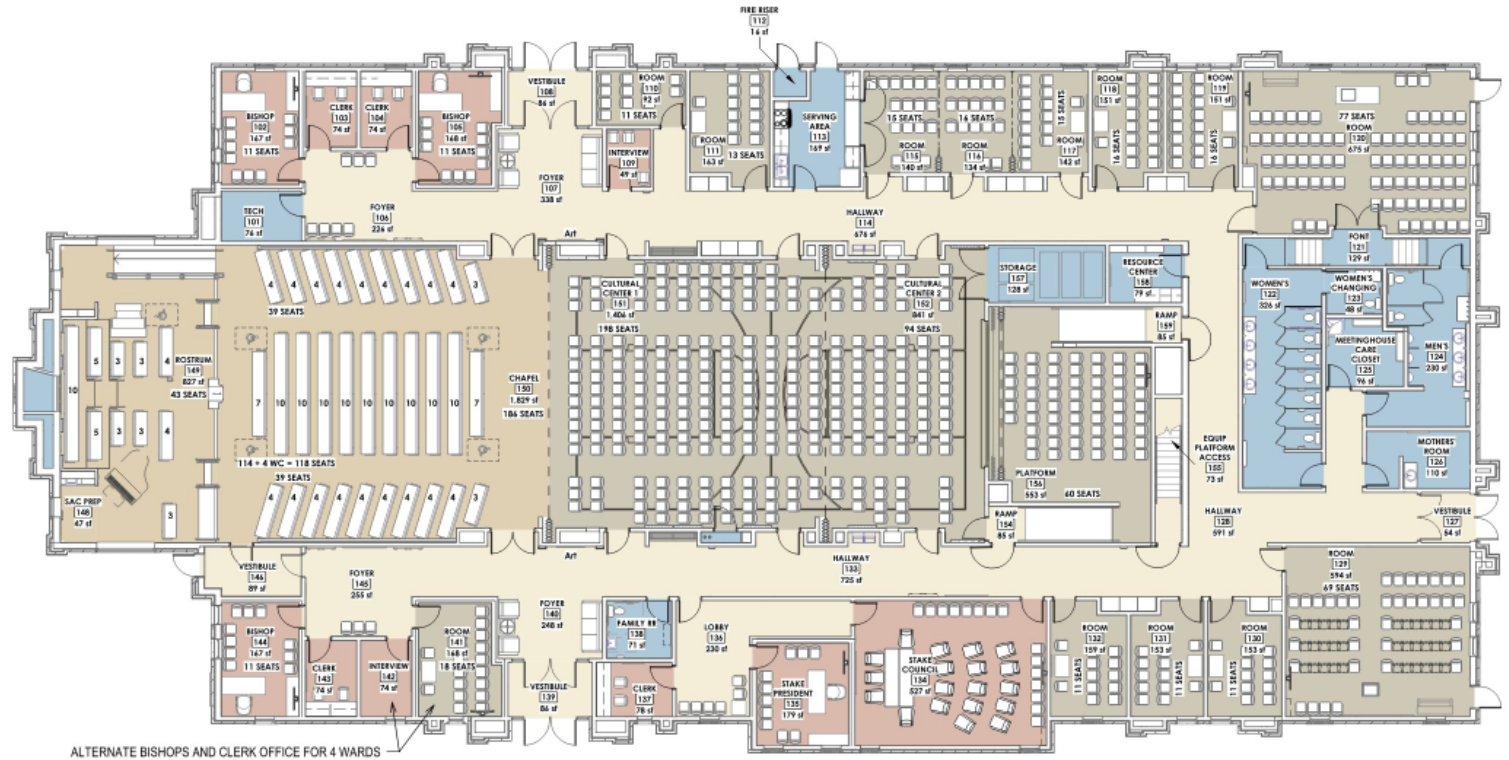
Stake President/Clerk: 2

Support Spaces:

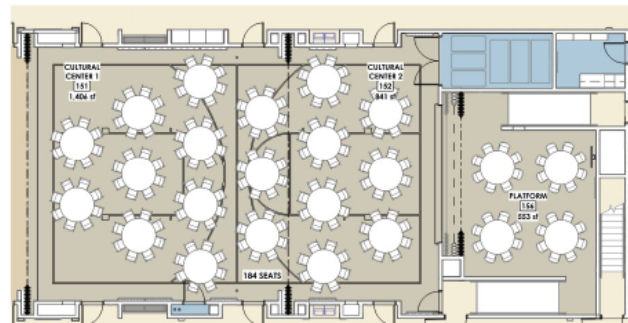
Serving Area: Yes

Resource Center: Yes

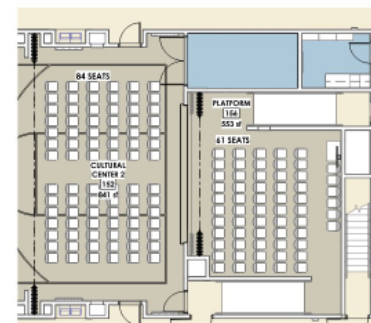
Mothers' Room: Yes



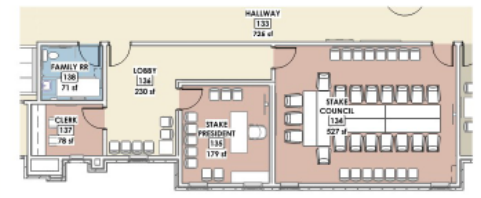
Conference/Class Seating Plan



Banquet Seating Plan

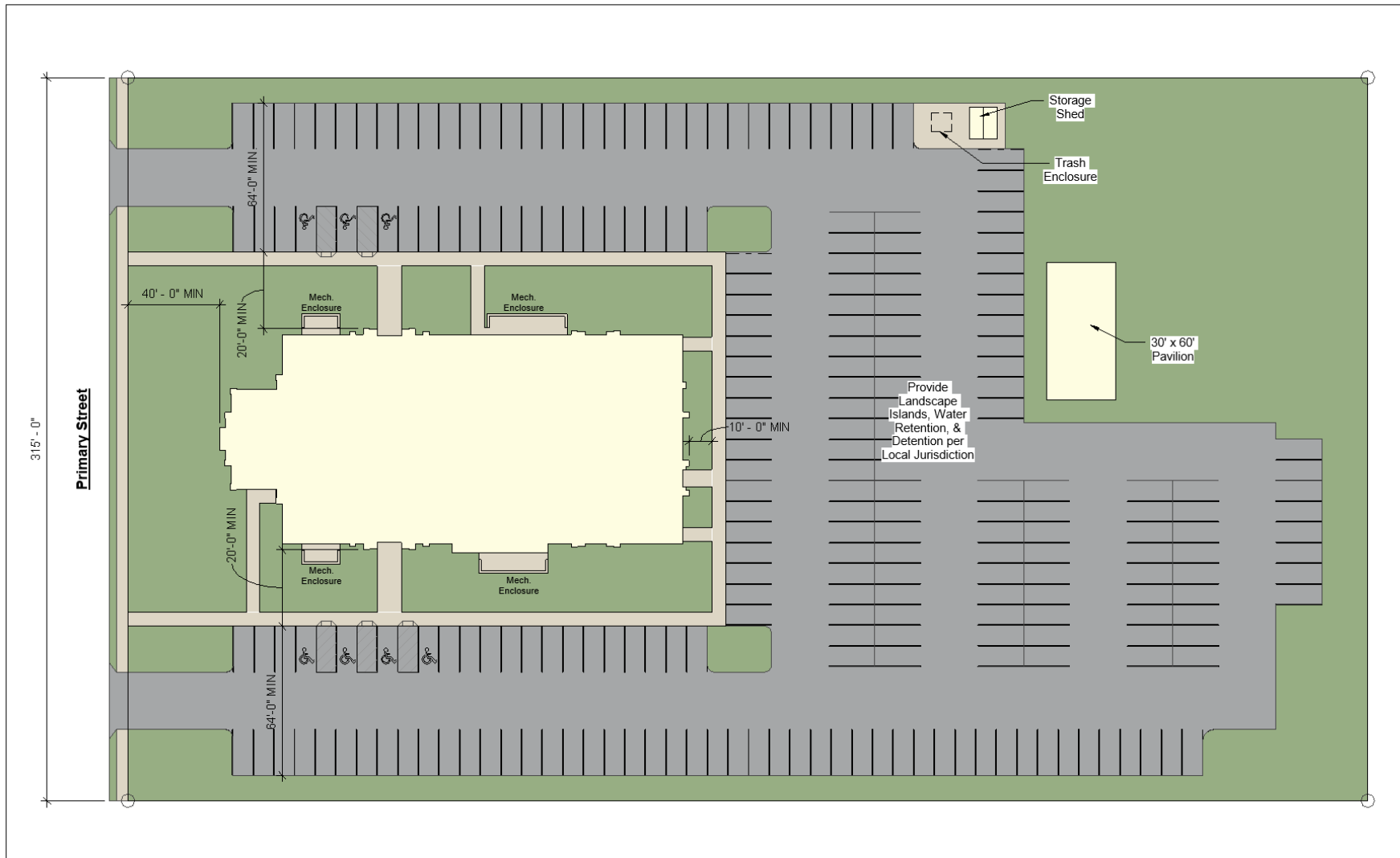


Platform Seating Plan



Alternate Stake Council Plan

Granger 250 Stake Center



Developed Site Size: 4 Acres Minimum

Parking: 240 Stalls

Sample Site Plan

1. Storage shed location varies by project.
2. Minimum required site area may vary due to jurisdictional requirements for parking, site retention, setbacks, etc.

Granger 250 Stake Center



Granger 300 Meetinghouse

US Standard Plans
Meetinghouse Facilities Department

Program:

Area: 18,336 SF

Assembly Seating:

Rostrum: 43

Chapel Floor: 206

Cultural Center 1: 226

Cultural Center 2: 104

Platform: 68

Conference Seating: 604

Teaching Areas: 24

Assembly Room

Capacities:

RS: 99

EQ: 74

PRI: 77

Cultural Center:

Multi-purpose

Indoor Sports: Yes

Platform: Yes

Banquet Seating: 200

Offices:

Unit Lead Offices: 3

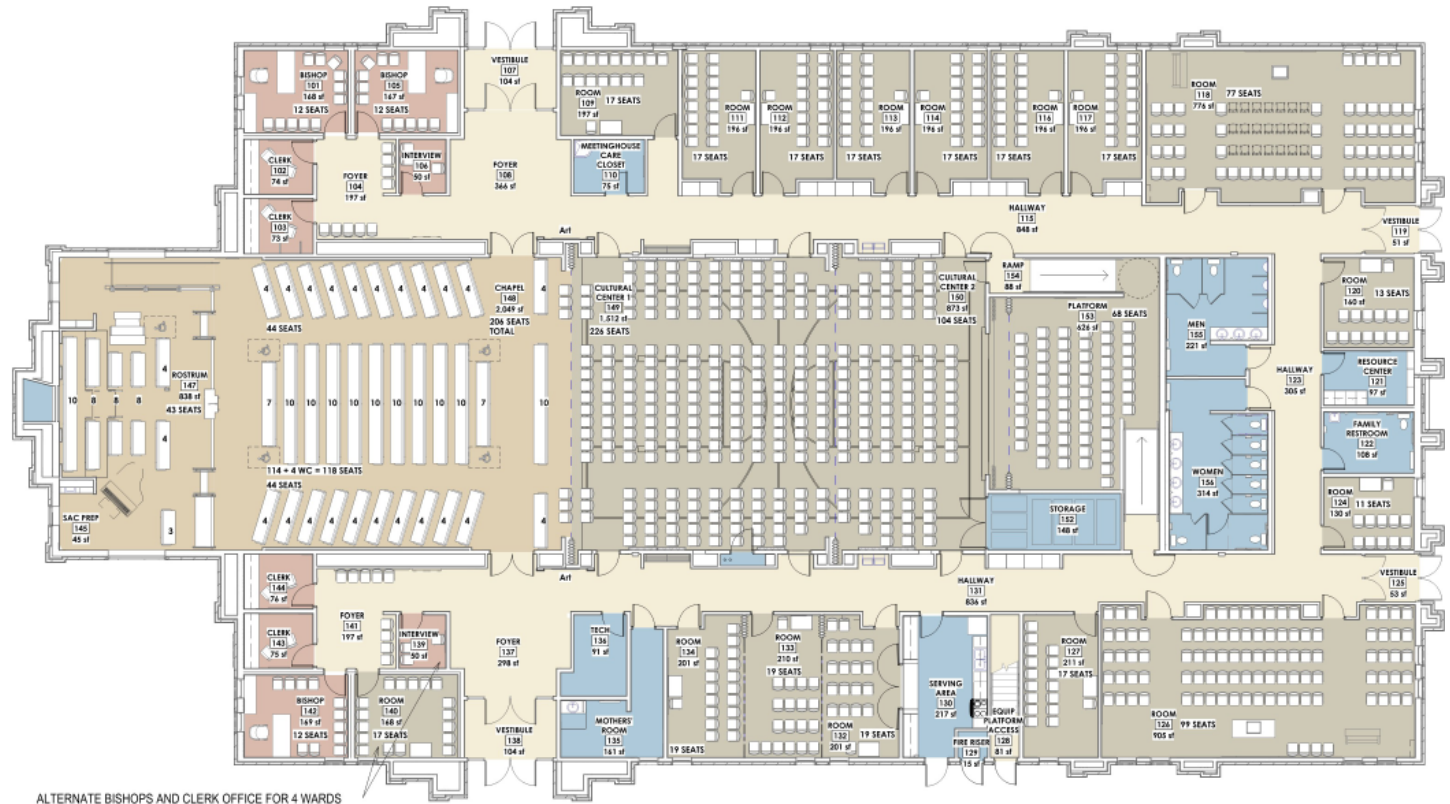
Clerks: 3

Support Spaces:

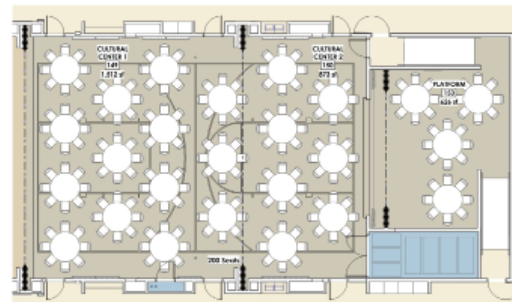
Serving Area: Yes

Resource Center: Yes

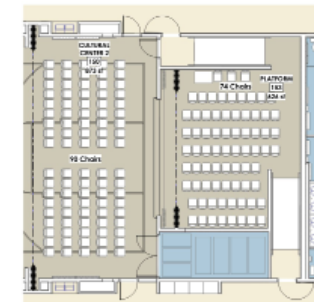
Mothers' Room: Yes



Conference/Class Seating Plan

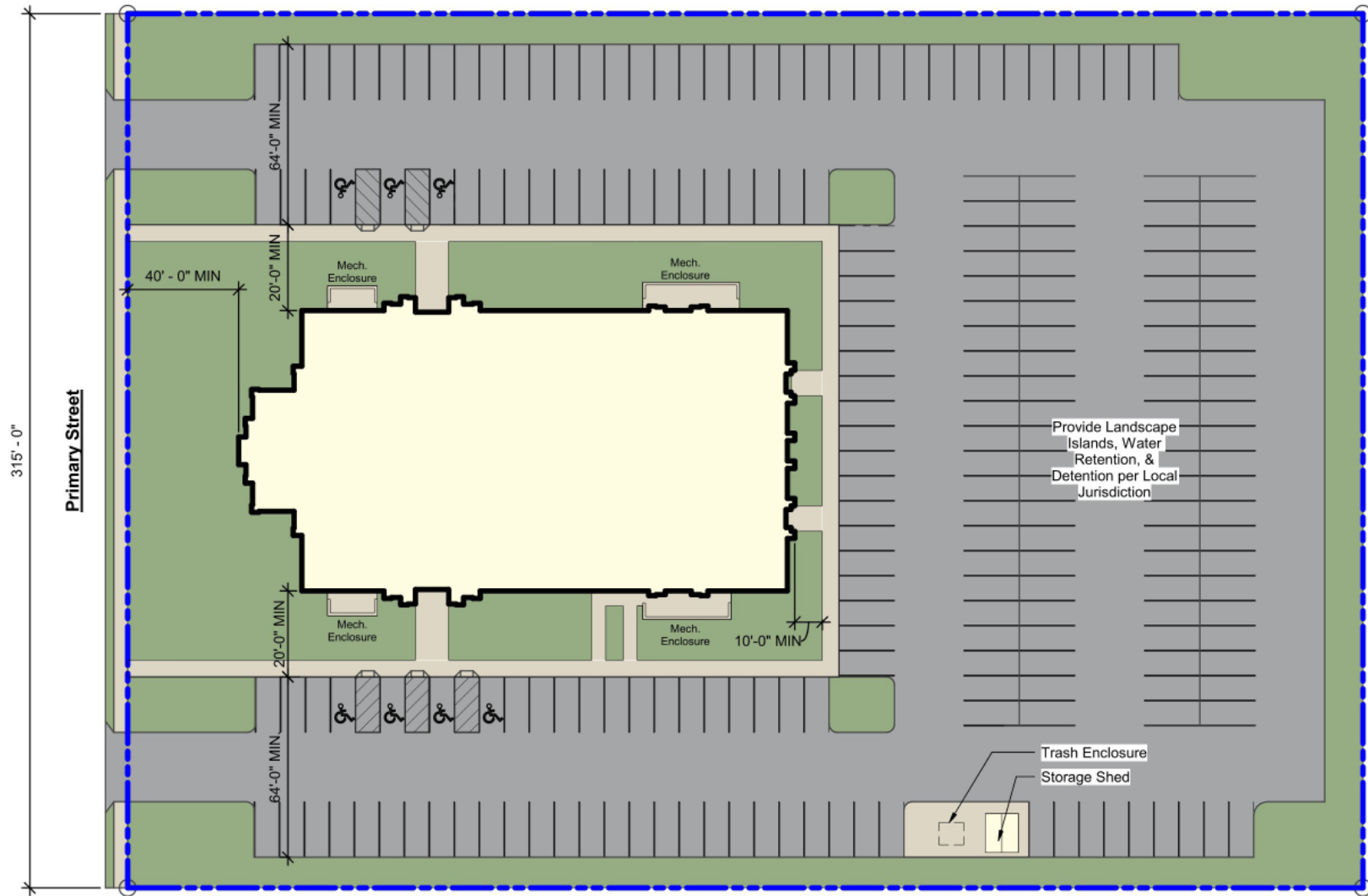


Banquet Seating Plan



Platform Seating Plan

Granger 300 Meetinghouse



Sample Site Plan

Granger 300 Meetinghouse



Vineyard 300 Stake Center

US Standard Plans
Meetinghouse Facilities Department

Program:

Area: 20,580 SF

Assembly Seating:

- Rostrum: 43
- Chapel Floor: 229
- Cultural Center: 374
- Platform: 58
- Conference Seating: 661
- Teaching Areas: 23

Assembly Room

Capacities:

- RS: 119
- EQ: 102
- PRI: 83

Cultural Center:

- Multi-purpose
- Indoor Sports: Yes
- Platform: Yes

Banquet Seating: 232

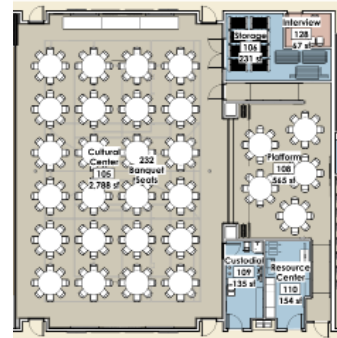
Offices:

- Unit Lead Offices: 3
- Clerks: 3
- Stake President/Clerk: 2
- Support Spaces:
- Serving Area: Yes
- Resource Center: Yes
- Mothers' Room: Yes

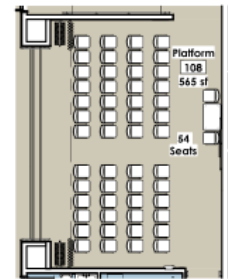


ALTERNATE BISHOPS AND CLERK OFFICE FOR 4 WARDS

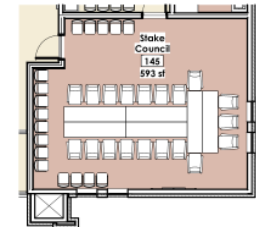
Conference/Class Seating Plan



Banquet Seating Plan

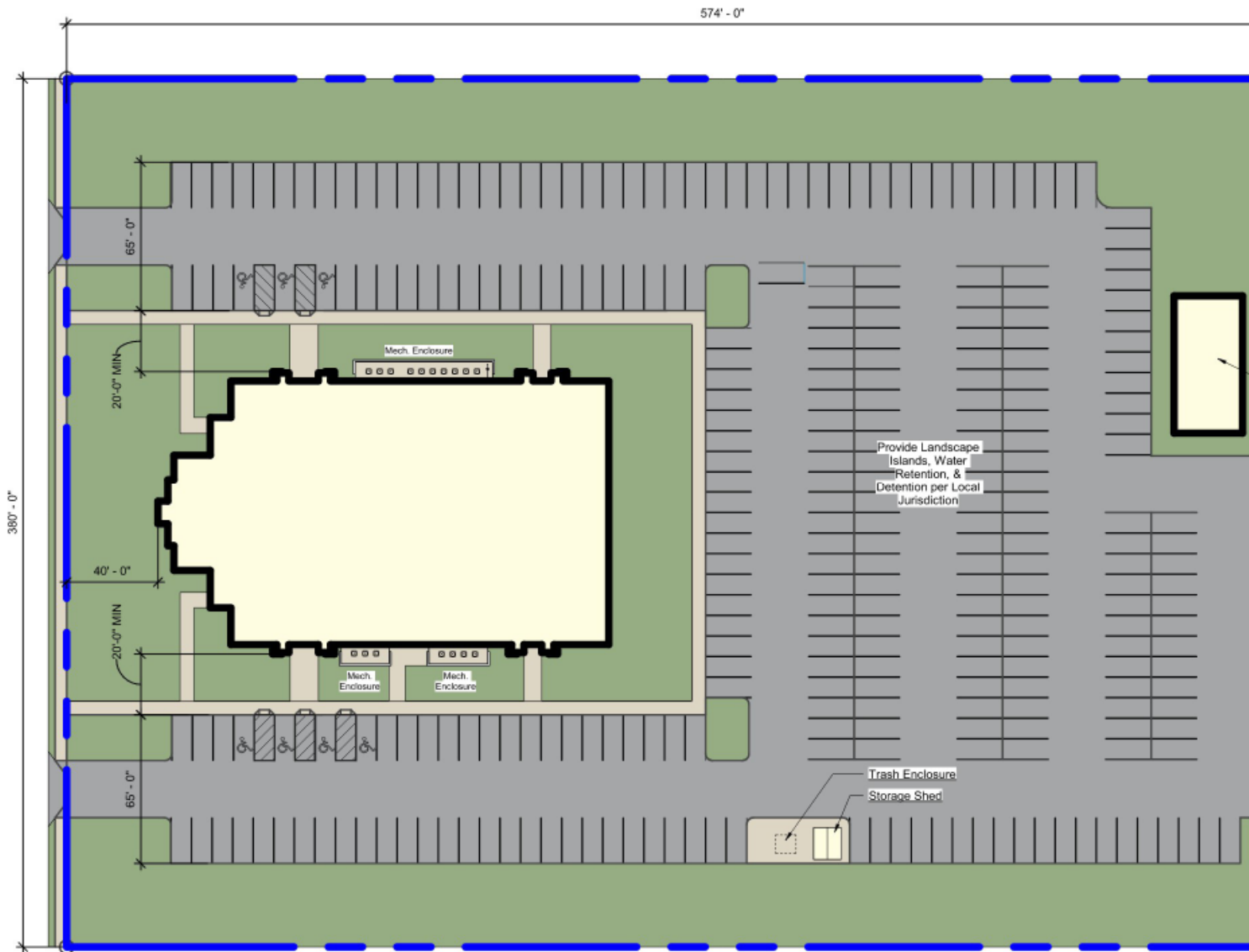


Platform Seating Plan



Alternate Stake Council Plan

Vineyard 300 Stake Center



Sample Site Plan

Vineyard 300 Stake Center

Reference Plans					
Standard Plan Name	Calvert 60 MH	Calvert 100 MH	Creston 150 MH	Creston 200 MH	Heritage 24
Attendance Capacities					
One Unit	60	100	150	200	350
Two Unit	N/A	N/A	140	200	350
Three Unit	N/A	N/A	100	160	330
Four Unit	N/A	N/A	60	100	310
Assembly Seating					
Rostrum	N/A	N/A	9	9	43
Chapel Floor	61	106	73	86	230
Multi-Purpose	N/A	N/A	91	48, 91	452, 126, 118
Conference Seating (In view of pulpit; including chapel floor & Multi-Purpose Rooms)	61	106	172	225	924
Teaching Areas - Includes Chapel, Multi-Purpose, Cultural Center, Platforms, Serving Area, Ward Leader Offices, and Classrooms	7	9	12	15	27
Assembly Teaching Areas	2 (Without chapel)	2 (Without chapel)	4 (Without chapel)	4 (Without chapel)	4 (Without chapel)
Assembly Areas Capacities (RS, EQ, PR)	61, 39, 28	106, 39, 28	59, 49	59, 49	134, 90, 107
Stake Council Room	No	No	No	No	Yes
Cultural Center					
Indoor Sports	Yes	Yes	Yes	Yes	Yes
Platform (Stage)	No	No	No	No	Yes
Banquet Seating	64	96	144	144	336
Offices					
Unit Leader Offices	2	2	2	2	3
Clerk Offices	2	2	2	2	3
Stake Offices	No	No	No	No	Yes
Support Spaces					
Serving Area	Yes	Yes	Yes	Yes	Yes
Resource Center	Yes	Yes	Yes	Yes	Yes
Mothers' Room	No	No	Yes	Yes	Yes
Baptismal Font	No	No	Yes	Yes	Yes
Building Area (sq. ft)	3,198	3,786	7,276	8,817	23,630
Acreage Range	1 to 1.5	1 to 1.5	3 to 4.5	3 to 4.5	6 to 8
Parking Range	25-30	40-45	60-70	80-90	290-330

Design Selection Chart



Calvert 60 Meetinghouse

US Standard Plans
Meetinghouse Facilities Department



Calvert 60 Meetinghouse

US Standard Plans
Meetinghouse Facilities Department

Program:

Area: 3,907 SF

Assembly Seating:

Multi-Purpose: 61

Teaching Areas: 7

Assembly Room

Capacities:

RS: 61

EQ: 39

PRI: 28

Multi-purpose:

Indoor Sports: No

Platform: No

Banquet Seating: 64

Offices:

Unit Lead Offices: 1

Clerks: 1

Support Spaces:

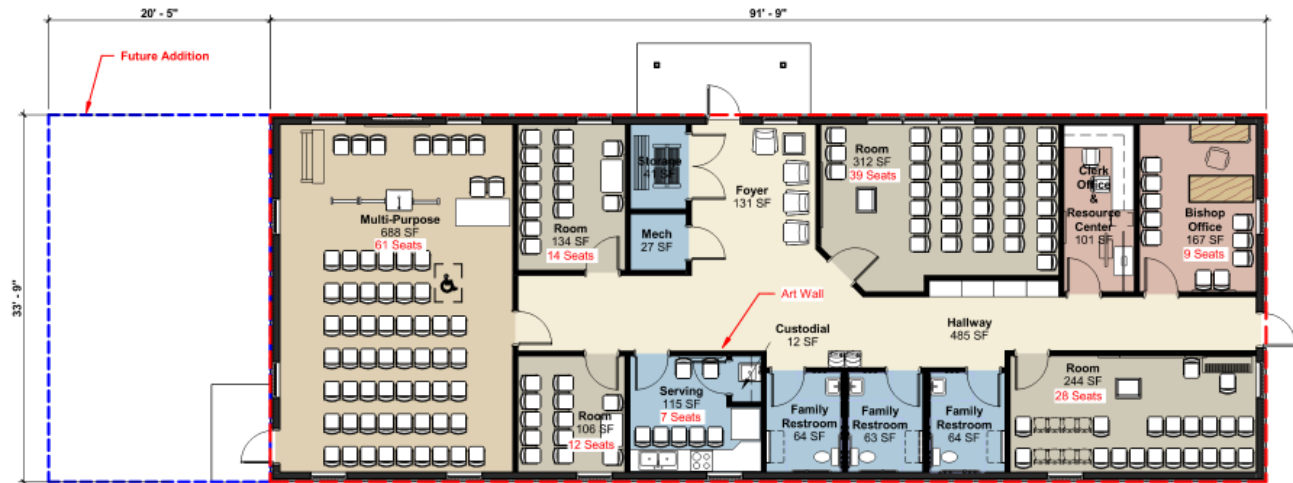
Serving Area: Yes

Resource Center: Yes

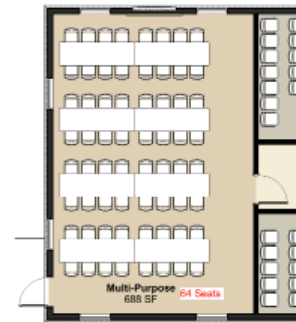
Mothers' Room: No

Building Capacity:

60-1



Conference/Class Seating Plan



Banquet Seating Plan

Calvert 60 Meetinghouse

Program:

Area: 3,786 SF

Assembly Seating:

Multi-Purpose: 106

Teaching Areas: 9

Assembly Room Capacities:

RS: 106

EQ: 39

PRI: 28

Multi-purpose:

Indoor Sports: No

Platform: No

Banquet Seating: 96

Offices:

Unit Lead Offices: 1

Clerks: 1

Support Spaces:

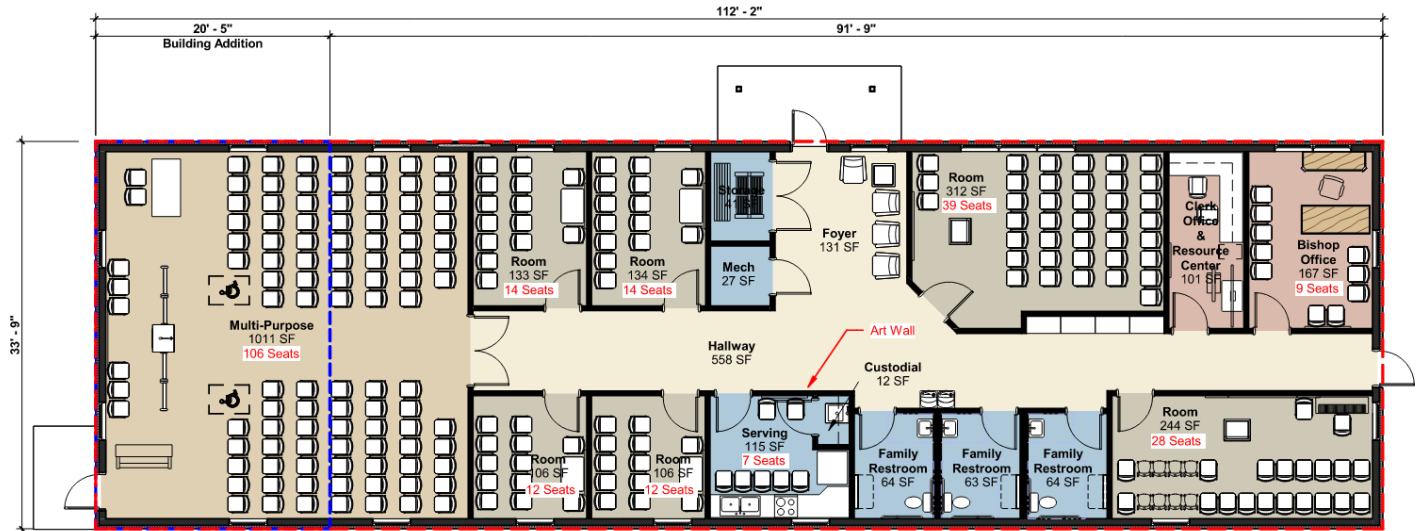
Serving Area: Yes

Resource Center: Yes

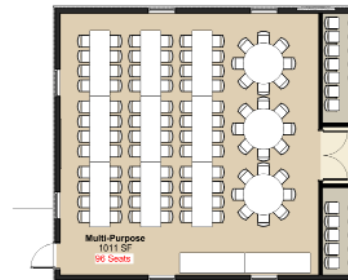
Mothers' Room: No

Building Capacity:

100-1



Conference/Class Seating Plan



Banquet Seating Plan

Calvert 100 Meetinghouse



Creston 150 Meetinghouse

US Standard Plans
Meetinghouse Facilities Department

Program:

Area: 7,276 SF

Assembly Seating:

Rostrum: 9

Chapel Floor: 73

Cultural Center: 97

View of Pulpit Seating: 172

Teaching Areas: 12

Assembly Room

Capacities:

RS: 59

PRI: 49

Multi-purpose:

Indoor Sports: Yes

Platform: No

Banquet Seating: 144

Offices:

Unit Lead Offices: 2

Clerks: 2

Support Spaces:

Serving Area: Yes

Resource Center: Yes

Mothers' Room: Yes

Building Capacity:

150-1

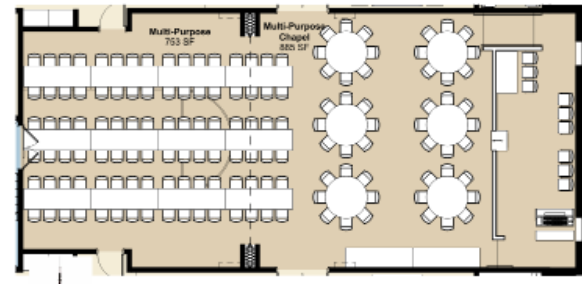
140-2

100-3

60-4



Conference/Class Seating Plan



Banquet Seating Plan

Creston 150 Meetinghouse

Program:

Area: 8,817 SF

Assembly Seating:

Rostrum: 9

Chapel Floor: 86

Cultural Center: 139

View of Pulpit Seating: 225

Teaching Areas: 15

Assembly Room Capacities:

RS: 59

PRI: 49

Multi-purpose:

Indoor Sports: Yes

Platform: No

Banquet Seating: 144

Offices:

Unit Lead Offices: 2

Clerks: 2

Support Spaces:

Serving Area: Yes

Resource Center: Yes

Mothers' Room: Yes

Building Capacity:

200-1

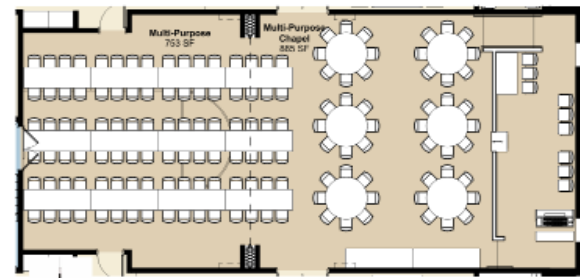
200-2

160-3

100-4



Conference/Class Seating Plan



Banquet Seating Plan

Creston 200 Meetinghouse



Heritage 24 Stake Center

US Standard Plans
Meetinghouse Facilities Department

Program:

Area: 23,630 SF

Assembly Seating:

Rostrum: 49

Chapel Floor: 228

Cultural Center 1: 452

Cultural Center 2: 126

Platform: 118

Conference Seating: 924

Teaching Areas: 27

Assembly Room

Capacities:

RS: 134

EQ: 90

PRI: 107

Cultural Center:

Multi-purpose

Indoor Sports: Yes

Platform: Yes

Banquet Seating: 336

Offices:

Unit Lead Offices: 3

Clerks: 3

Stake President/Clerk: 2

Support Spaces:

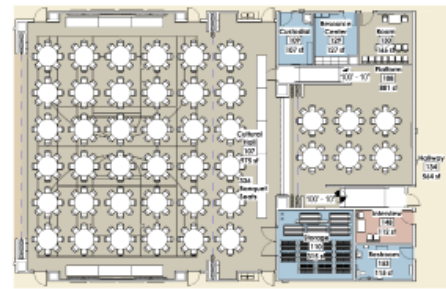
Serving Area: Yes

Resource Center: Yes

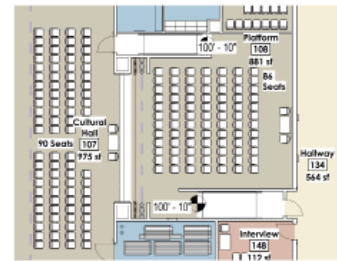
Mothers' Room: Yes



Conference/Class Seating Plan



Banquet Seating Plan

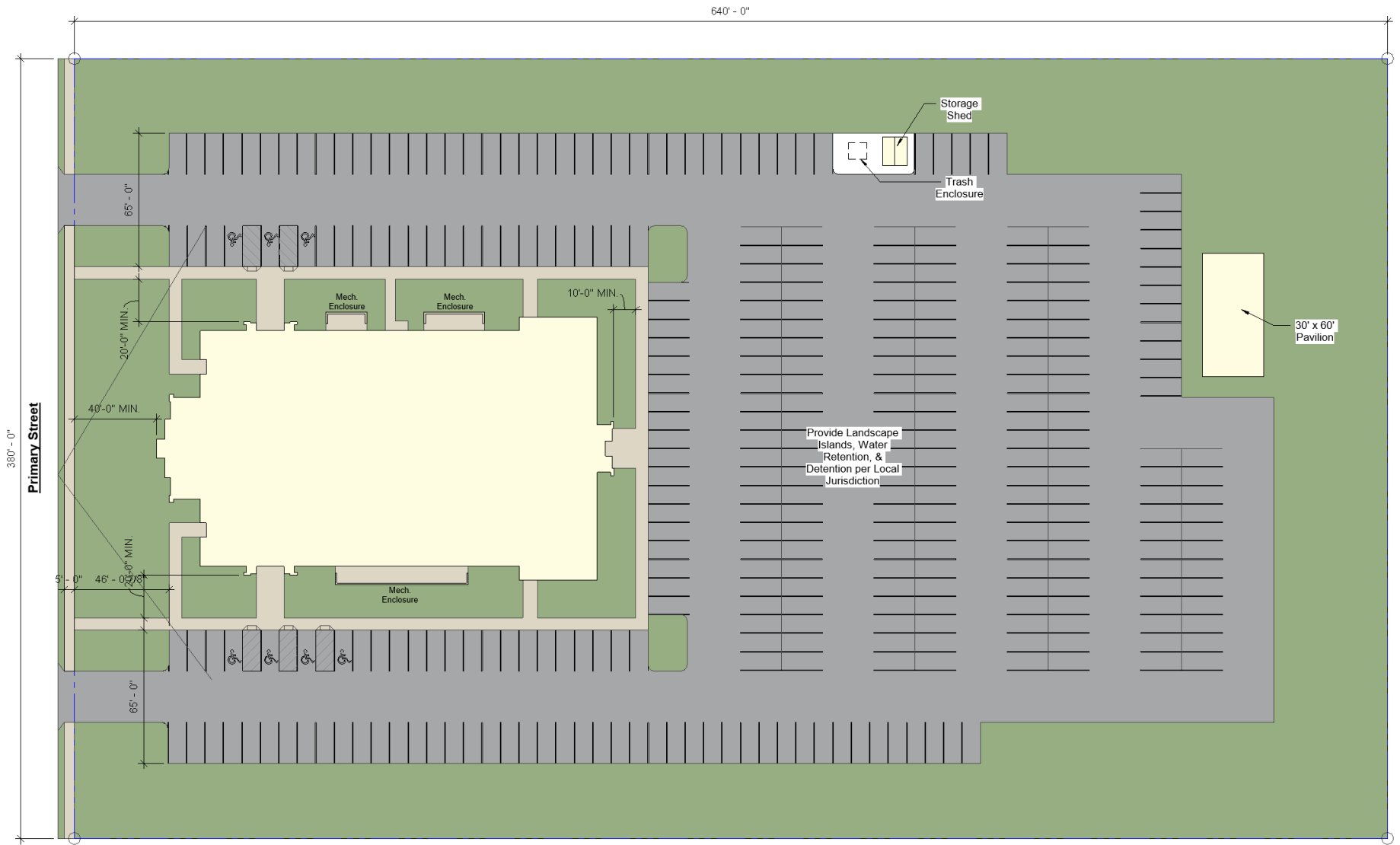


Platform Seating Plan



Alternate Stake Council Plan

Heritage 24 Stake Center



Developed Site Size: 6 Acres Minimum
 Parking: 330 Stalls

Sample Site Plan

1. Storage shed location varies by project.
2. Minimum required site area may vary due to jurisdictional requirements for parking, site retention, setbacks, etc.

Heritage 24 Stake Center