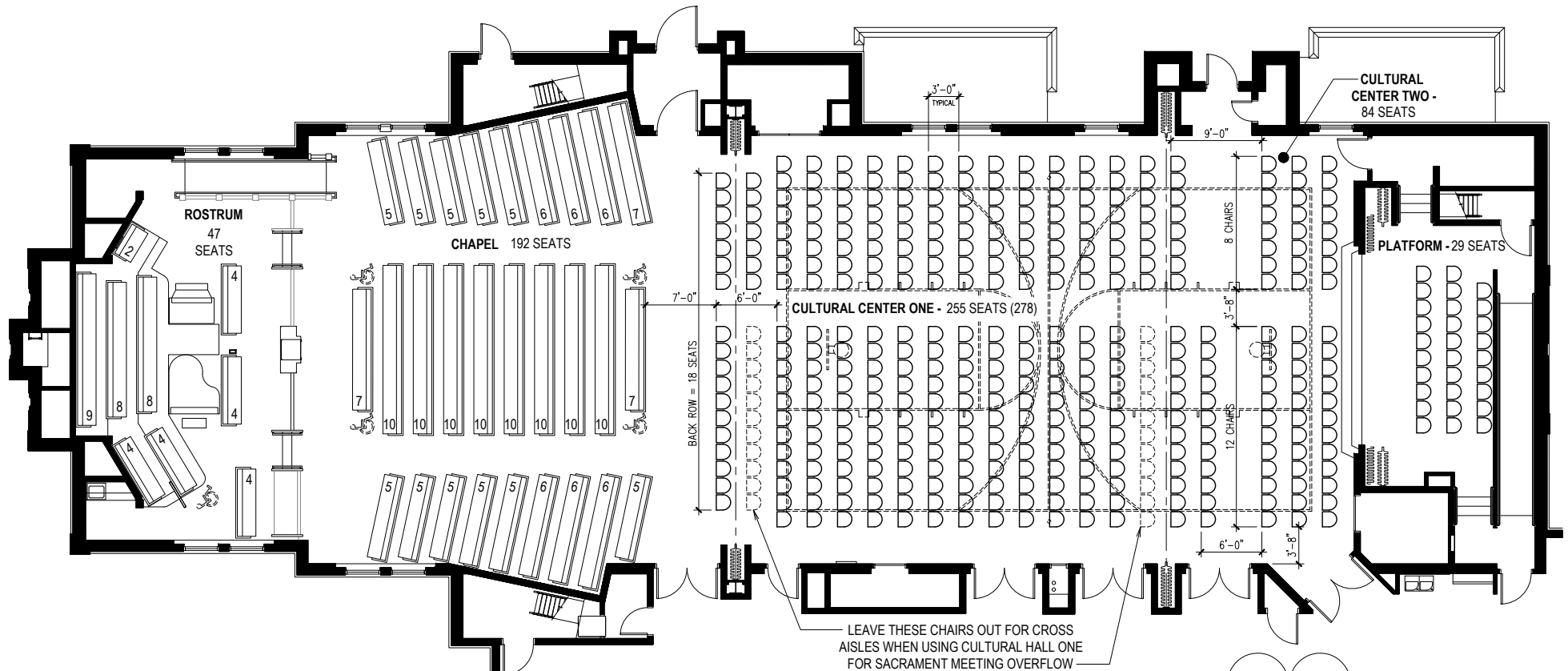


- 101 - CLASSROOM NUMBER
- ① - TEACHING AREAS (17 Total)
Each Ward's Bishop's
Office is a teaching area

BUILDING FLOOR PLAN

INDEPENDENCE 230
MEETINGHOUSE



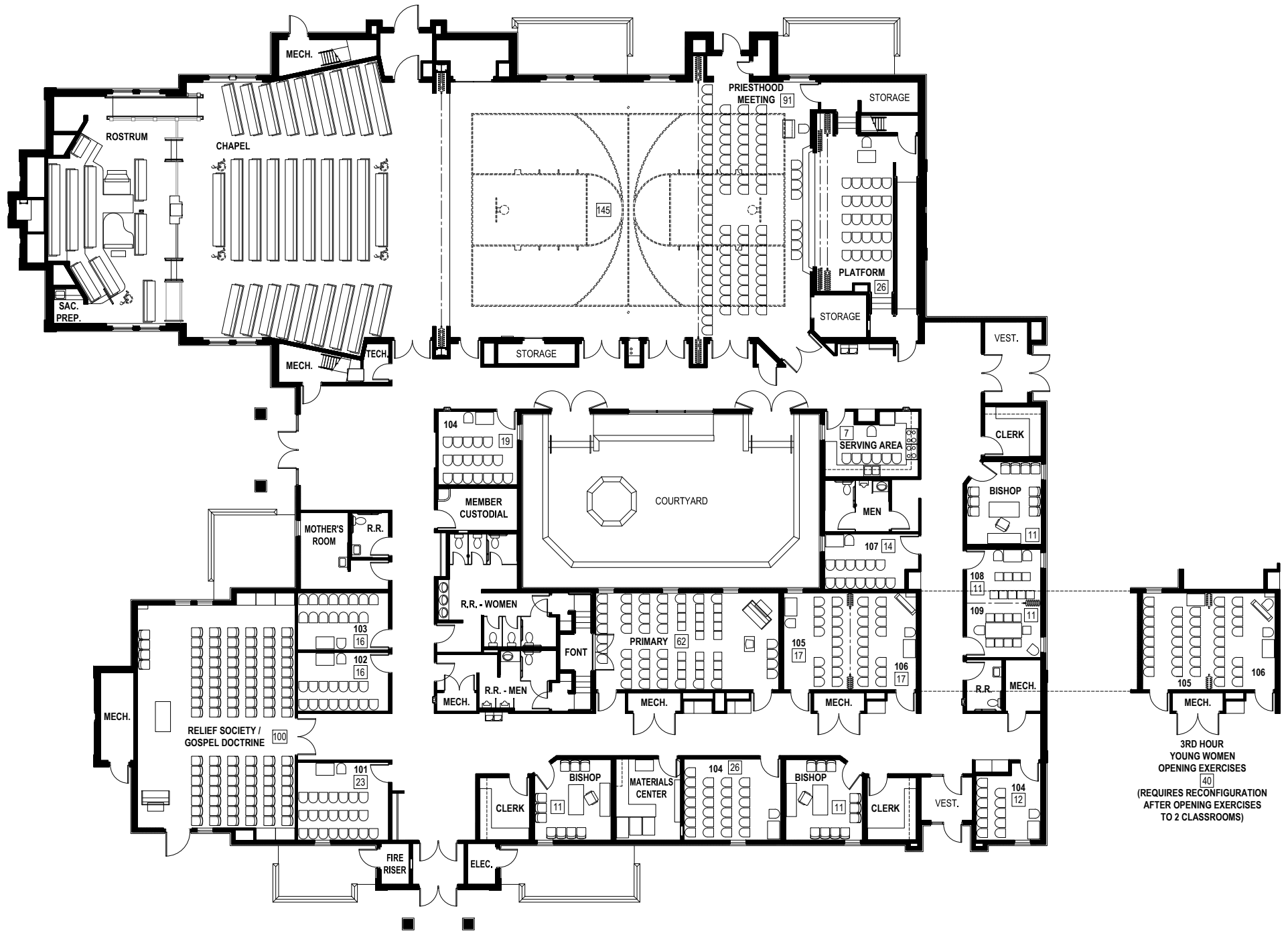
CULTURAL CENTER OVERFLOW AND CONFERENCE SEATING

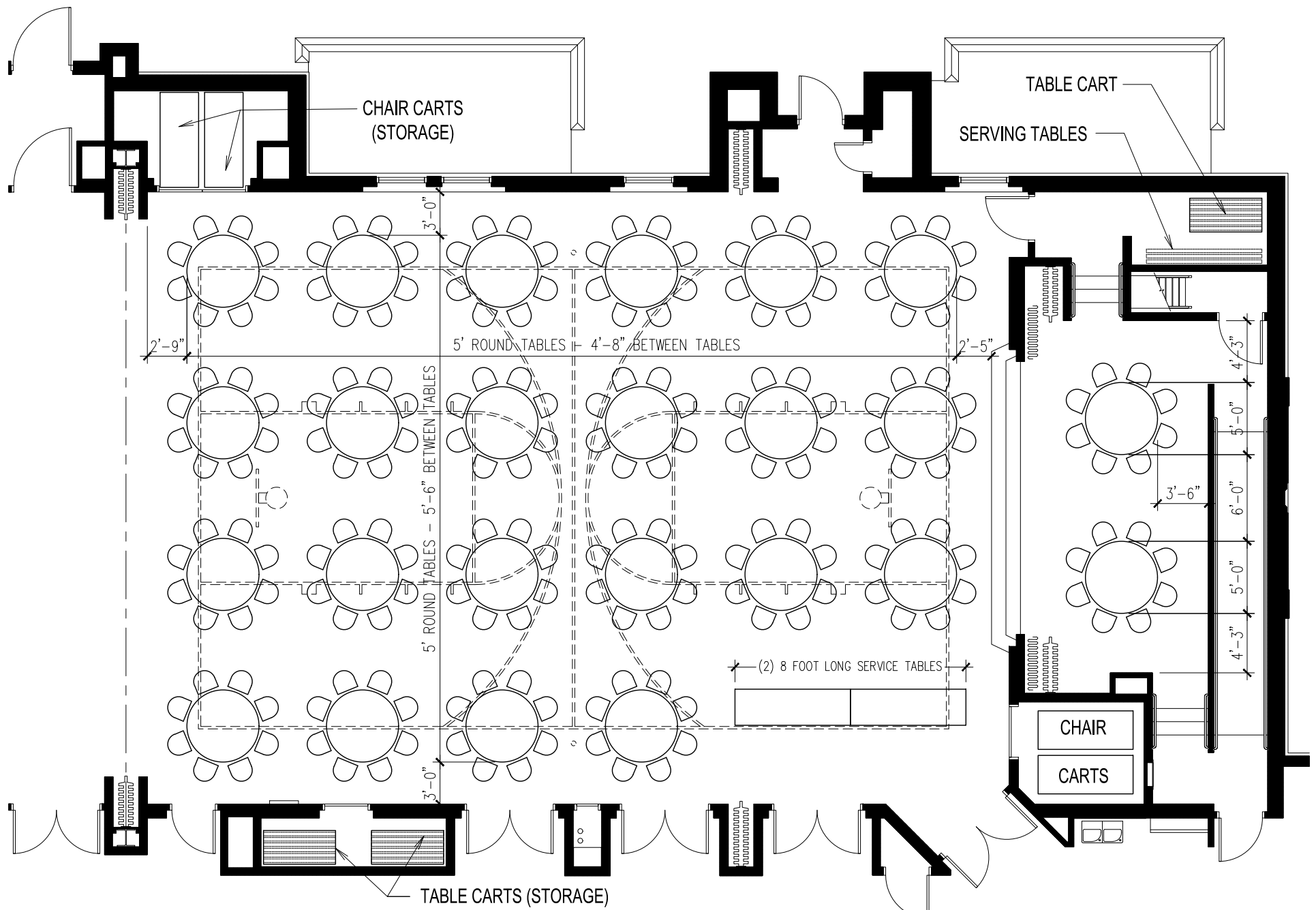
INDEPENDENCE 230 MEETINGHOUSE

CHAPEL PEWS	192
BACK ROW CHAIRS	18
CULTURAL CENTER ONE	<u>255</u>
TOTAL SACRAMENT MEETING	465
PLUS ROSTRUM	47

CHAPEL AND ROSTRUM	262
CULTURAL CENTER ONE	278
CULTURAL CENTER TWO	84
PLATFORM	<u>29</u>
TOTAL CONFERENCE SEATING	653

NOTE:
PEW SEATING IS MEASURED
AT 20 " PER PERSON

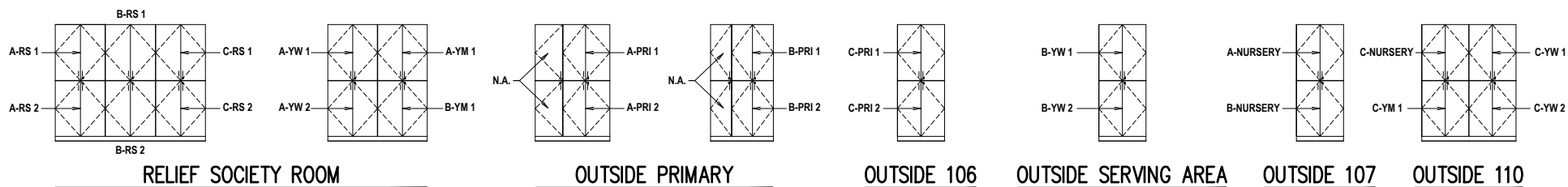
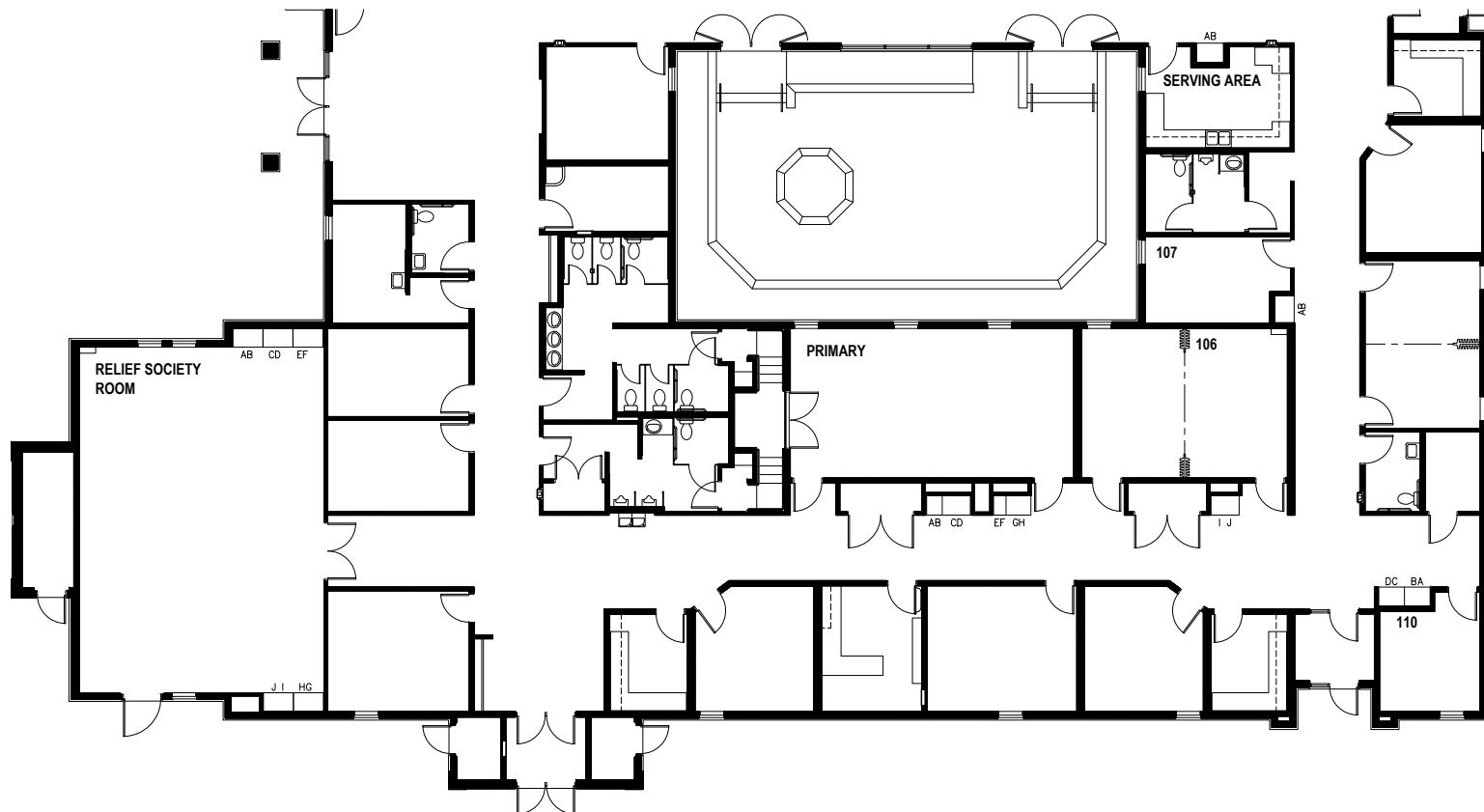




CULTURAL CENTER:
 22 TABLES = 176 SEATS
PLATFORM:
 2 TABLES = 16 SEATS

CULTURAL CENTER BANQUET SEATING

INDEPENDENCE 230
MEETINGHOUSE

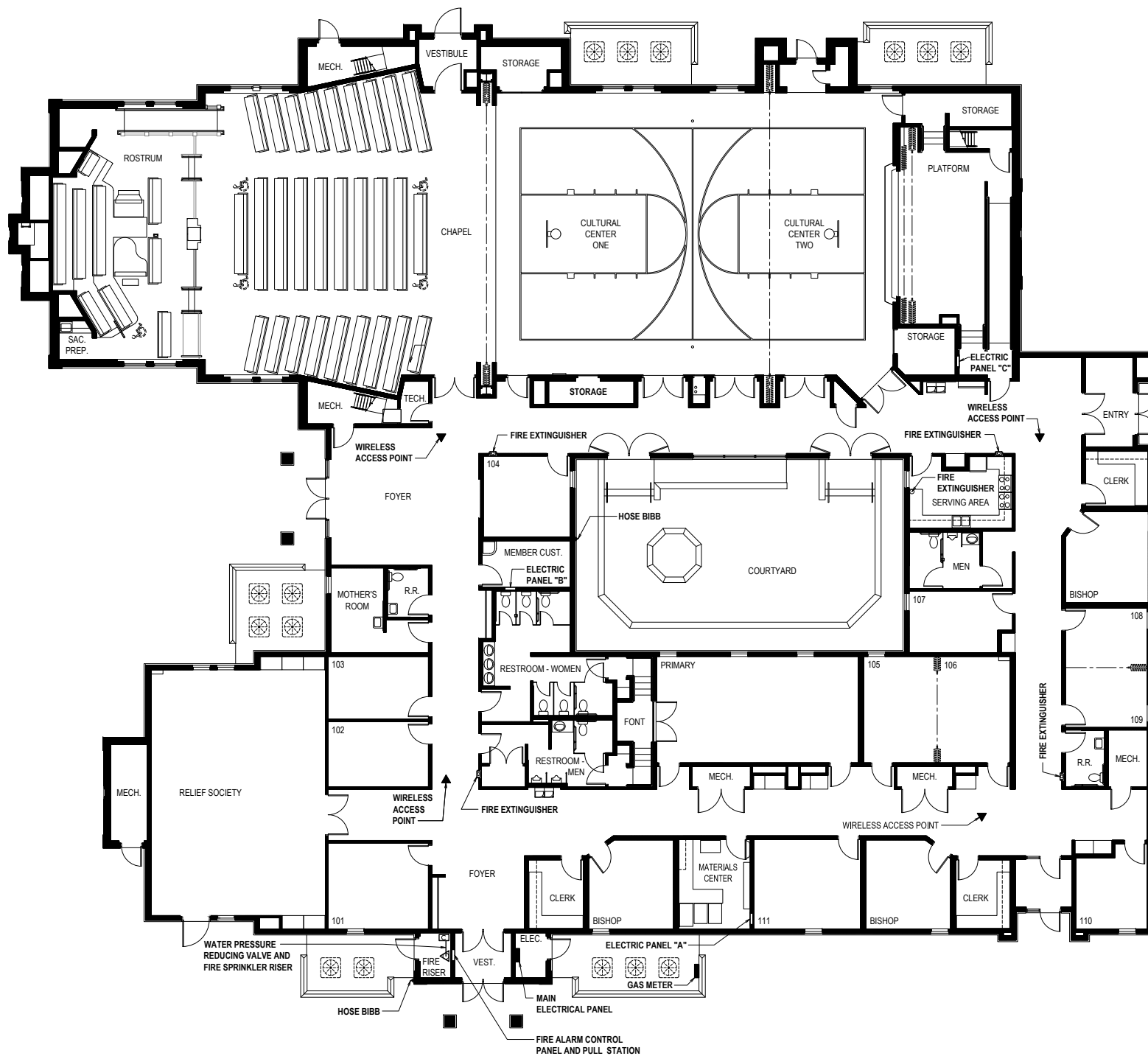


AUXILIARY CABINETS

INDEPENDENCE 230
MEETINGHOUSE

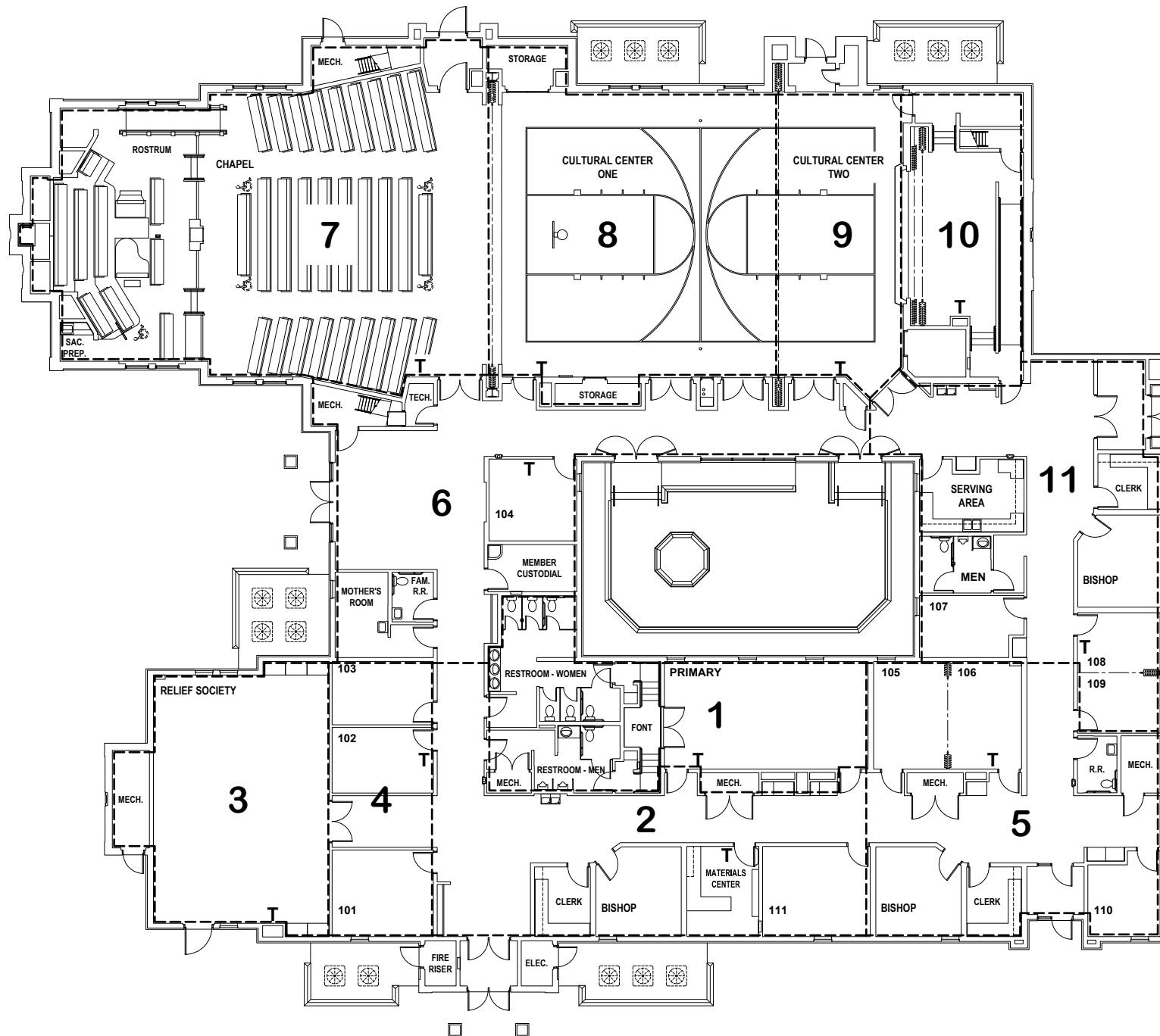
WARDS	RS	PRI	YW	YM	NURSERY
A	2	2	2	1	1
B	2	2	2	1	1
C	2	2	2	1	1
N.A.	(4) HALF CABINET UNITS NOT ASSIGNED				

A-RS 1 =
A = WARD
RS = RELIEF SOCIETY
1 = CABINET



(3) FIRE EXTINGUISHERS IN UPSTAIRS
MECHANICAL ROOMS

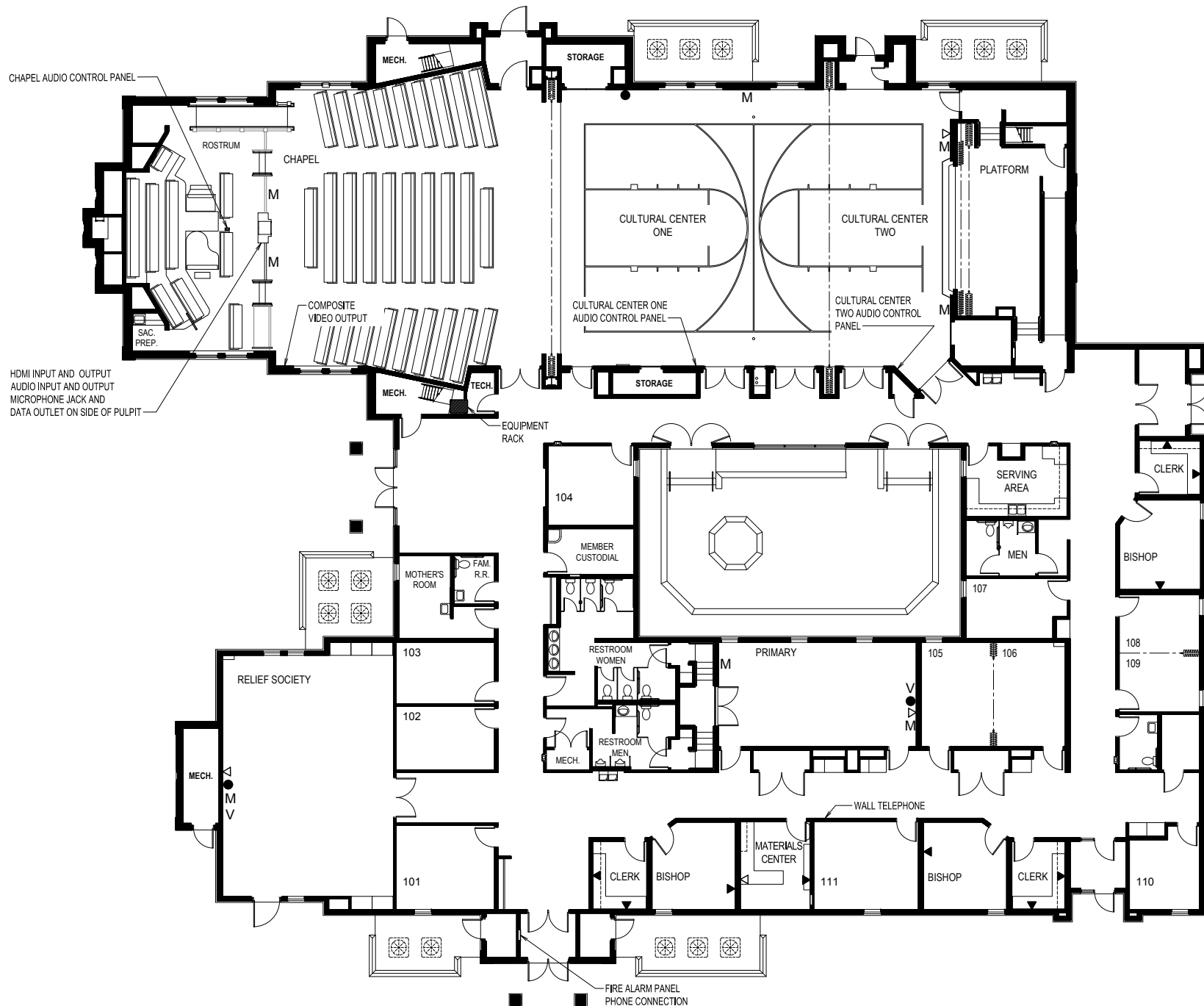
BUILDING SERVICES PLAN INDEPENDENCE 230 MEETINGHOUSE



MECHANICAL FLOOR PLAN

INDEPENDENCE 230
MEETINGHOUSE

T - Thermostats
3 Mechanical Zone



TECHNOLOGY FLOOR PLAN

INDEPENDENCE 230
MEETINGHOUSE

- M Microphone Outlet
- Video Outlet Receiver
- ∇ Volume Control
- ▼ Telephone/Data Outlet
- ▽ Data Outlet