

STANDARD PLAN INFORMATION NOTICE

Physical Facilities Department

This notice addresses new information that may be helpful in your work with the meetinghouse standard plan program. Please take time to review the information in order to understand its potential impact on construction work under your stewardship.

Date of Notification: *June 25, 2007*

Information Title:

Replacement Fabric for "Cobblestone"

Information:

A replacement fabric for "Cobblestone" has been selected and approved. Please see attached "sample card" for name, pattern, and color numbers. Actual sample cards will follow with the next update to the Style & Furnishings Selection Handbook (S&FS Handbook) scheduled for distribution later in July. This change will also be reflected in an updated Pre-set Interior Color Scheme Schedule, also to follow with the next update to the S&FS Handbook.

Reminder: This fabric will be the default fabric on all pews, opera seating, and padded folding chairs for all New Construction projects where the wood stain is Oak 95 (just as the "Cobblestone" fabric was). This change will be implemented on all orders received beginning Tuesday, June 26, 2007.

Note

- The cost of this fabric is slightly higher than the Cobblestone and Revival fabrics. Consequently, the price of pews, padded folding chairs, and opera seating using this fabric will be slightly higher than indicated in the current PRG. Please contact Todd Sorensen in Purchasing (801-240-1215) with questions regarding pricing.*

Instructions for Implementation:

Pay close attention to your orders. During the transition to this new fabric your oversight will be very important. Please work closely with Purchasing to ensure your orders are filled correctly as pews and padded folding chairs for a given project could be ordered both before and after this change but need to be upholstered in the same fabric.

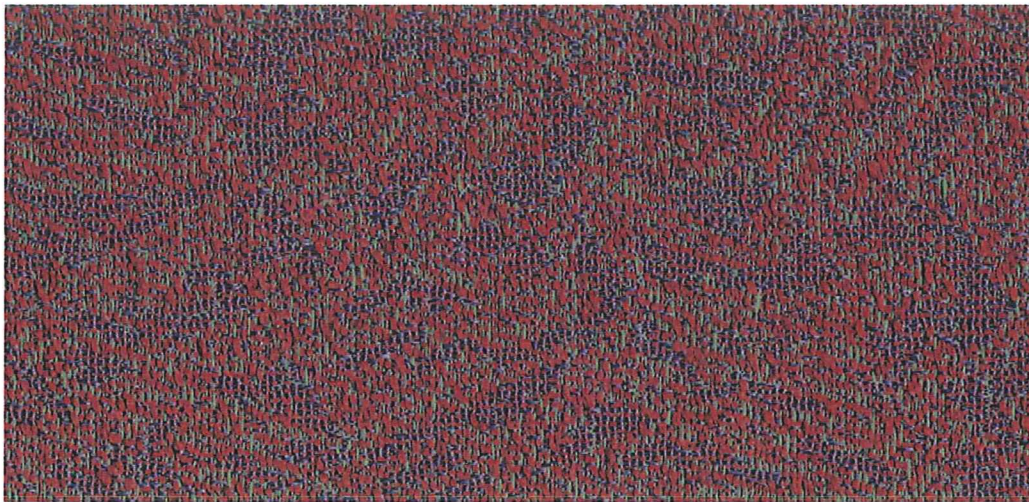
Attachments:

Topography Sample Card.pdf

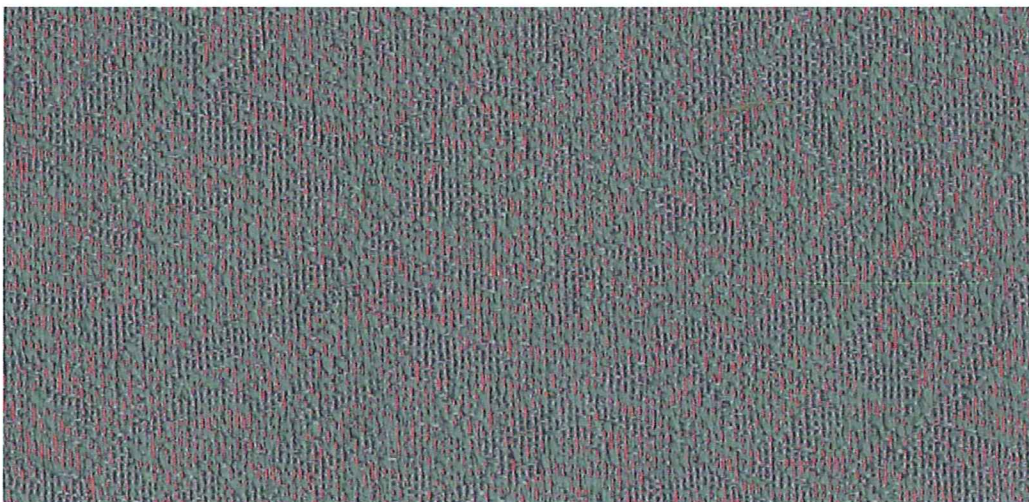
Distribution:

√ Area Project Managers (FYI)	√ AED Division Copy (R. Stenson)	DTA Office
√ Project Managers	√ Standard Plans Section Copy (Don Hein)	√ Tom Stonehocker
√ Regional Facilities Managers (FYI)	√ Purchasing Division Copy (Ron Peterson)	√ Terry Cano
√ Facilities Managers	√ Other _____ PM and FM Clerks	√ Lyle Sheneman

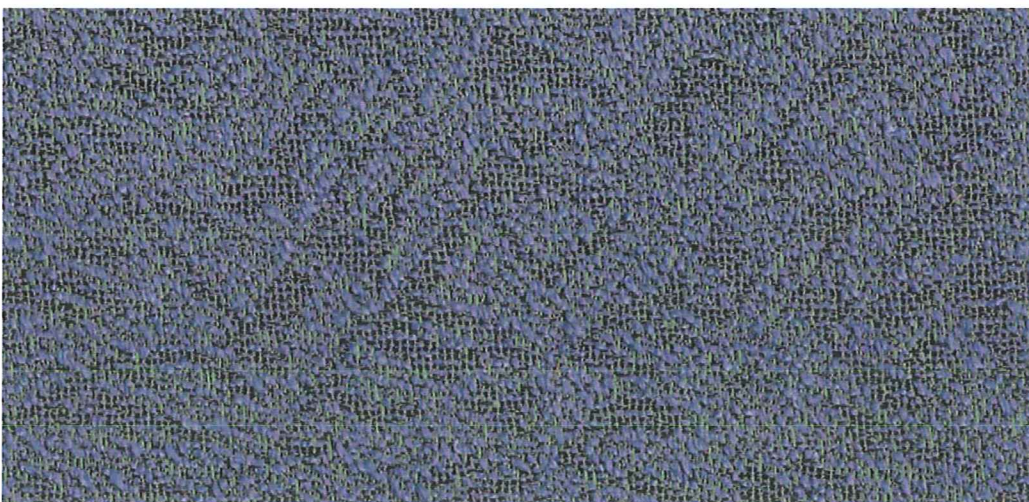
**PEW, OPERA, OVERFLOW, GUEST & OPTIONAL
RELIEF SOCIETY CHAIR**
(For Garnet, Emerald, and Sapphire color schemes in Classical buildings
and buildings with Oak 95 wood stain)



*Interface*FABRIC™
Name: Topography
Style: 54122
Color: 8402
Garnet



*Interface*FABRIC™
Name: Topography
Style: 54122
Color: 7702
Emerald



*Interface*FABRIC™
Name: Topography
Style: 54122
Color: 0604
Sapphire